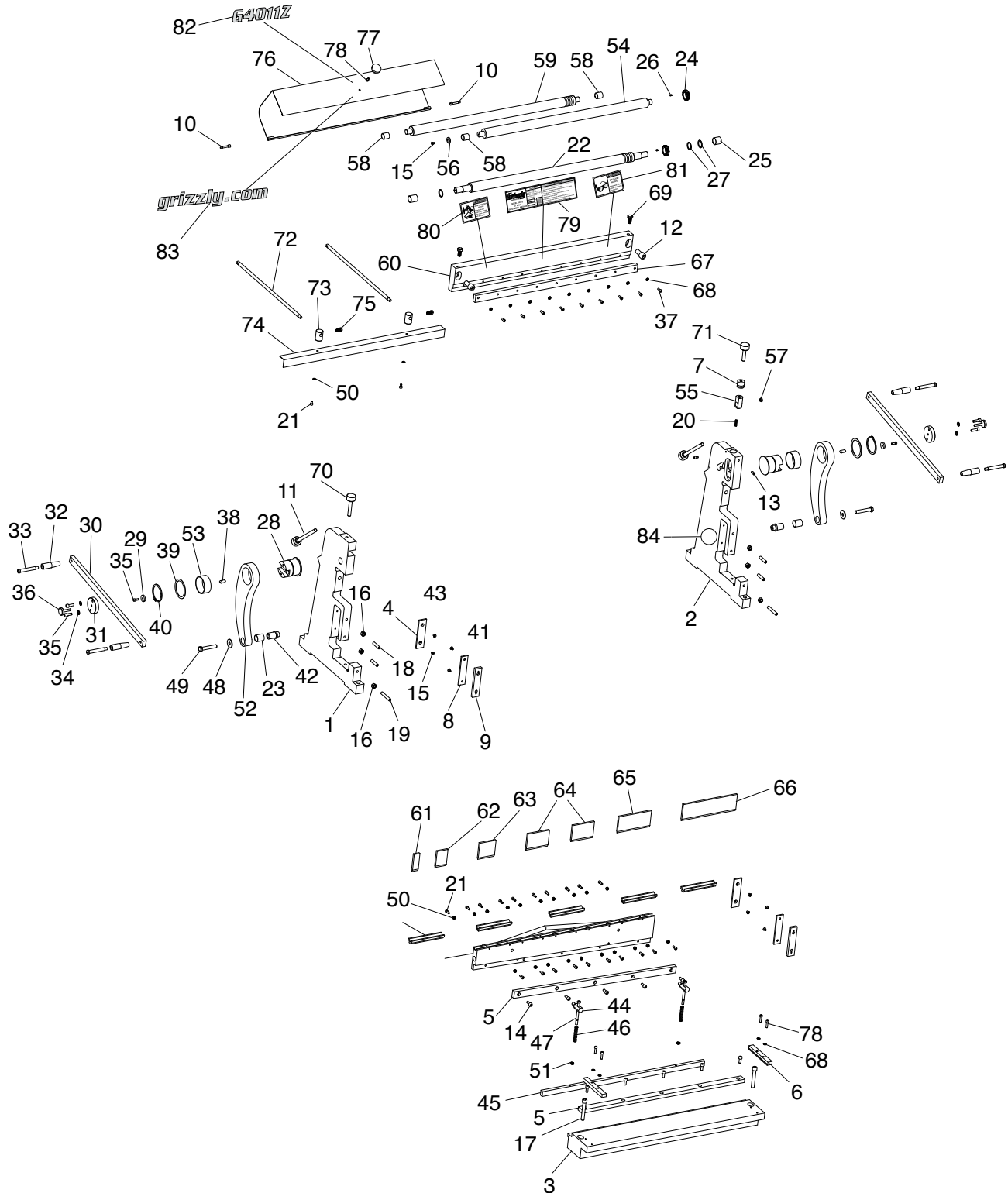


SECTION 7: PARTS

G4011Z Breakdown



Please Note: We do our best to stock replacement parts whenever possible, but we cannot guarantee that all parts shown here are available for purchase. Call (800) 523-4777 or visit our online parts store at www.grizzly.com to check for availability.



G4011Z Parts List

REF	PART #	DESCRIPTION
1	P4011Z001	SUPPORT FRAME (LH)
2	P4011Z002	SUPPORT FRAME (RH)
3	P4011Z003	WORK TABLE
4	P4011Z004	BLADE SIDE PLATE (LOWER)
5	P4011Z005	SHEAR BLADE
6	P4011Z006	TABLE GUIDE
7	P4011Z007	BUSHING
8	P4011Z008	BLADE SIDE PLATE (UPPER)
9	P4011Z009	CONNECTING PLATE
10	P4011Z010	HINGE PIN
11	P4011Z011	KNOB BOLT M12-1.75 X 185, 14
12	P4011Z012	CAP SCREW M16-2 X 35
13	P4011Z013	SET SCREW M8-1.25 X 30
14	P4011Z014	CAP SCREW M8-1.25 X 20
15	P4011Z015	FLAT HEAD CAP SCR M6-1 X 10
16	P4011Z016	HEX NUT M10-1.5
17	P4011Z017	CAP SCREW M12-1.75 X 80
18	P4011Z018	SET SCREW M10-1.5 X 45
19	P4011Z019	SET SCREW M10-1.5 X 60
20	P4011Z020	COMPRESSION SPRING
21	P4011Z021	CAP SCREW M6-1 X 10
22	P4011Z022	ROLLER (LOWER)
23	P4011Z023	BUSHING
24	P4011Z024	GEAR 19T
25	P4011Z025	BUSHING
26	P4011Z026	KEY 4 X 4 X 8
27	P4011Z027	SPACER (COPPER)
28	P4011Z028	ECCENTRIC SHAFT
29	P4011Z029	FLAT WASHER 8MM (RUBBER)
30	P4011Z030	CRANK ARM
31	P4011Z031	CRANK ARM HUB
32	P4011Z032	CRANK HANDLE
33	P4011Z033	HANDLE STEP BOLT M10-1.5 X 95, 14
34	P4011Z034	FLAT WASHER 8MM
35	P4011Z035	CAP SCREW M8-1.25 X 25
36	P4011Z036	LOCK KNOB BOLT M8-1.25 X 50, 35
37	P4011Z037	CAP SCREW M6-1 X 16
38	P4011Z038	KEY 8 X 8 X 25
39	P4011Z039	SPACER
40	P4011Z040	EXT RETAINING RING 65MM
41	P4011Z041	SHEAR BLADE HOLDER
42	P4011Z042	THREADED BOLT BUSHING M12-1.75

REF	PART #	DESCRIPTION
43	P4011Z043	FINGER RECEIVER
44	P4011Z044	HOLD-DOWN ARM
45	P4011Z045	HOLD-DOWN
46	P4011Z046	COMPRESSION SPRING
47	P4011Z047	CAP SCREW M8-1.25 X 110
48	P4011Z048	FENDER WASHER 12MM
49	P4011Z049	HEX BOLT M12-1.75 X 70
50	P4011Z050	HEX NUT M6-1
51	P4011Z051	HEX NUT M8-1.25
52	P4011Z052	CONNECTING ARM
53	P4011Z053	BUSHING
54	P4011Z054	ROLLER (UPPER)
55	P4011Z055	THREADED SHAFT
56	P4011Z056	UPPER ROLLER SPACER
57	P4011Z057	SHAFT BUSHING
58	P4011Z058	BUSHING (COPPER)
59	P4011Z059	ROLLER (REAR)
60	P4011Z060	FINGER MOUNT
61	P4011Z061	FINGER 1"
62	P4011Z062	FINGER 2"
63	P4011Z063	FINGER 3"
64	P4011Z064	FINGER 4"
65	P4011Z065	FINGER 6"
66	P4011Z066	FINGER 10"
67	P4011Z067	FINGER RETAINER BAR
68	P4011Z068	FLAT WASHER 6MM
69	P4011Z069	HEX BOLT M12-1.75 X 25
70	P4011Z070	KNOB BOLT M12-1.75 X 90, 68
71	P4011Z071	KNOB BOLT M12-1.75 X 75, 50
72	P4011Z072	REAR SUPPORT ROD
73	P4011Z073	REAR SUPPORT BRACKET
74	P4011Z074	REAR SUPPORT
75	P4011Z075	HEX BOLT M8-1.25 X 20 (COPPER)
76	P4011Z076	ROLLER COVER
77	P4011Z077	COVER KNOB M6-1
78	P4011Z078	CAP SCREW M6-1 X 25
79	P4011Z079	ID LABEL
80	P4011Z080	PINCH/AMPUTATION WARNING LABEL
81	P4011Z081	EYE INJURY WARNING LABEL
82	P4011Z082	MODEL NUMBER LABEL P-7527C
83	P4011Z083	GRIZZLY.COM LABEL P-7527C
84	P4011Z084	GRIZZLY GREEN TOUCH-UP PAINT

